



UV-Inkjet

Large format UV- & UV-LED

Product Manual

UV-Inkjet

Large format UV- & UV-LED

In this product manual we will guide you through the various aspects of working with our **STAFIX®STATIC UV-Inkjet** products. Following this manual will help you to achieve the desired results and avoid potential difficulties.

The product manual consists of the following segments:

1. Product Properties	3
2. Designing and Pre-press	5
3. Storage	6
4. Printing	7
5. Postpress	8
6. Surface Compatibility	9
7. Use and Installation	10

1. PRODUCT PROPERTIES

STAFIX®STATIC UV-Inkjet is a glue-free sticker material that adheres to almost any clean, even surface with a static charge. The material adheres on average for 3 months and is easy to apply and removable without leaving any residue. The material adheres on the unprinted side only.



STAFIX®STATIC film is 100% recyclable as a grade 5 plastic and doesn't release toxic gases into the environment if incinerated. The cardboard used for the backer is PEFC certified.

STAFIX®STATIC UV-Inkjet is printable with UV, UV-LED curable inks only.

SHELF LIFE

In the sealed original package, unprinted **STAFIX®STATIC UV-Inkjet** reels can be stored up to **12 months** following our storage guidelines.

PRODUCT DATA

	WHITE		CLEAR	
	FILM	BACKER	FILM	BACKER
Weight (g/m ²)	36.3	200	45.5	200
Thickness (mm)	0.05	0.152	0.05	0.152
Total Weight (g/m ²)	236.3		245.5	
Total Thickness (mm)	0.202		0.202	
Stafix® product code	ST-50PP2W200EF		ST-50PP1C200EF	

REEL SPECIFICATION

	WHITE		CLEAR	
	50 M	100 M	50 M	100 M
Reel Width (mm)	700	100	700	700
Reel Diameter (cm)	15	19.5	15	19.5
Core Diameter(cm)	7.62 (3")		7.62 (3")	
Reel Weight (kg)	9.8	18.2	10.1	18.8

FORMATS, PACKING AND TOLERANCE

FORMAT	REELS/PALLET
0,7 x 50m	12
0,7 x 100m	12

Format tolerance is 0,5% in length and width.

CUSTOM SIZE ORDERS

For larger quantities, cost efficiency can be achieved by producing custom length reels. Please consult us regarding minimum quantities and delivery times.



2. DESIGNING AND PREPRESS

Do not use a Total Ink Coverage (TIC) greater than 240%. Use the Under Colour Removal (UCR) and Grey Component Replacement (GCR) if needed. Heavy deposits of ink should be avoided, especially near the edges of the artwork, to prevent the film from curling or rippling. Leave an unprinted border at the edges of the artwork if possible. Do not overlap a combination of two or more solid colours. Heavy layers of ink may cause the film to swell.

For pictures a raster of 60 - 70 l/cm is recommended. Create the black text of only 100% black for better registration. Make sure that the printing machine have flexible inks available and they are used for printing on **STAFIX®STATIC UV-Inkjet.**

	FORMAT	MAX. PRINT AREA
UV-Inkjet (reels)	700 mm x 50 / 100 m	700 mm

CLEAR MATERIAL

When printing an artwork on the clear material that will be used for window advertising, print the image mirror-wise and apply an additional covering white layer to reduce the transparency. Rasterize the covering white to 95%. Additionally to the covering white you can use 240% maximum TIC on the colour build.

The sticker or poster is always installed from the unprinted side to the glass. The material adheres only from the unprinted side. Not all the presses have white inks available; consult with your printing house beforehand.

3. STORAGE

Store **STAFIX®STATIC UV-Inkjet** in the original package at 25% to 50% relative humidity and 20°C to 27°C temperature. The material should remain sealed in the original wrap until the **STAFIX®STATIC UV-Inkjet** material has warmed up to print-room temperature. The print-room recommended relative humidity is 50% to 60% and the temperature 20°C to 27°C.

	STORAGE CONDITIONS	PRINTING CONDITIONS
Humidity	25% to 50%	50% to 60%
Temperature	20°C to 27°C	

The warming-up time depends on the pallet weight and the temperature difference between the warehouse and the print-room, see table below for more details:

PACKAGING		WEIGHT	TEMPERATURE DIFFERENCE (°C)								
FORMAT		KG (APPROX)	5°	10°	15°	20°	25°	30°	35°	40°	HOURS
700 mm x 50 m	One box (1 reel)	12 kg	1	2	3	4	5	5	6	6	
700 mm x 100 m	One box (1 reel)	22 kg	1	3	5	7	8	9	10	11	

Once the **STAFIX®STATIC UV-Inkjet** material have reached the same temperature as the print room you can unwrap the pallet. Let the material acclimatize without the wrap / plastic bag for 2 hours prior to printing. **STAFIX®STATIC UV-Inkjet** reels are packed in a plastic bag within the box. After use re-seal the remaining unused material in the original package. Sudden changes of temperature and/or humidity may cause the cardboard to change size, and this could wrinkle the film.

4. PRINTING UV-Inkjet & UV-LED

Always run a test with the right inks and right conditions before printing a commercial job, specially for the first time printing on STAFIX®STATIC.

INK USAGE & RECOMMENDED INKS

The **STAFIX®STATIC UV-INKJET** film is printable with UV and UV LED curable inks only. The film does not have a receptive primer and therefore it cannot be printed with solvent or water based inks. Adjust the UV lamps to a minimum level that still cures the inks but does not wrinkle the film. If the intensity of the UV lamps is too high it may curl the material and reduce the electrical charge. Use a printing profile suitable for non-absorbent substrates.

Avoid using the highest printing quality, it is recommended to use medium or low printing quality (approx.: 600 x 600 dpi). The maximum printing quality applies too much ink to the material and would affect negatively its ability to adhere to the surface. **Always use flexible inks** for printing on **STAFIX®STATIC UV-Inkjet** film, The rigid inks cause the film to curl away from the surface, contact your UV-Inkjet printing machine manufacturer for more information.

Static eliminators

Do not use any antistatic devices including sprays, tinsel, or on-press electronics. These will reduce the static charge loaded in the material.

Coatings

Do not use any varnish or aqueous coatings! Coatings will eliminate the static charge and curl the material.

5. POSTPRESS

STAFIX®STATIC can be die-cut and kiss-cut. Avoid long thin shapes as they might curl away from the surface and round the inner corners because the inner-sharp corners might cause the film to tear, always round the corners when die-cutting or kiss cutting. Perforating, binding and direct mail inserting is also possible. When trimming, use sharp, nick-free blades.

PACKING & SHIPPING

Protect the products well from humidity and dust when sending the finished goods to your client. Avoid packing the material with products that emit VOC's (Volatile Organic Compounds / Solvents) as they will reduce the static charge. Do not pack the material using vacuum-sealed packaging; the freshly printed ink can also emit VOC's. Ship the materials flat. When shipping the reel material, do so by having the film on the outside edge. Do not fold the material for shipping.

All information concerning our products is based on current quality levels. Stafix Ltd. reserves the right to change the specifications of the contents as part of our continual product development. The purchaser must confirm product compatibility before the use of the product. The purchaser assumes the risks for any use, operation and application of the material. Stafix Ltd. is liable for damage only upon the purchase amount excluding any indirect damage.

Stafix Ltd will not accept any claims or warranty on material that has not been handled according to these instructions. The English version is solely and exclusively valid and legally binding.

6. SURFACE COMPATIBILITY

✓ = suitable

✗ = non-suitable

— = suitable with limitations
(requires previous tests)

SURFACES	COMPATIBILITY
Smooth Surfaces	✓
Rough Surfaces	✓
Ceramic Tiles	✓
Glas/Mirrors/Windows	✓
Aluminium	✓
Steel	✓
Plastic	✓
Wood	✓
Varnished Wood	✓
MDF board	✓
Painted Walls	✓
Brickwalls	✓
Coated Paper	✓
Uncoated Paper	✓
PVC High & Low Density Boards	—
Textile, Fabric (clothing, sofa, etc.)	✗

APPLICATIONS / PLACES	COMPATIBILITY
Home Appliances	✓
Window Graphics	✓
Furniture (Tables, Cabinets etc.)	✓
Sanitary Ceramics	✓
Fridge/Freezer	✓
TV / Computer Screens	✓
Magazine inserts	✓
Indoor	✓
Outdoor	✗
Flooring (PVC, Laminat, Tiles)	✗

7. USE AND INSTALLATION

When the **STAFIX®STATIC UV-Inkjet** film is removed from the support, the glue will fully remain on the paper backer. **STAFIX®STATIC** adheres on average for 3 months to almost any even surface. The less the material is repositioned, the longer it stays. **STAFIX®STATIC** adheres from the unprinted side only and is bubble free. **STAFIX®STATIC** is recommended for temporary indoor use. Please smooth the material against the surface applied, removing the air between the surface and the film, for better adherence. Avoid placing the material onto freshly painted walls, the VOC's emitted by the fresh-paint reduce the static charge of the film.

For large posters or banners exceeding 1m in length is recommended to do the installation with assistance of another person to avoid the film being wrinkled or catching dust and dirt from the floor. Apply the film always from the unprinted side!

Due to the great variety of substrates and the growing number of new applications, the installer must check the suitability of the printable media for each application.

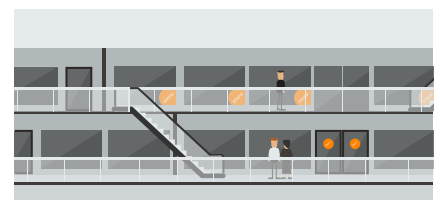
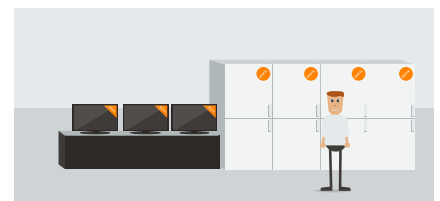
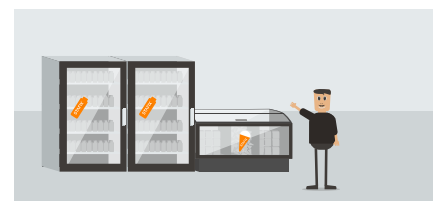
USE

STAFIX®STATIC adheres to various clean and smooth surfaces, such as:

- glass
- stainless steel
- tiles
- plastic
- aluminium
- varnished wood

Thanks to the material's versatility, it can be used in various applications, such as;

- Retail advertising (e.g. freezers and -fridges)
- Store decoration and window display
- Events and exhibitions



INSTALLING STAFIX®STATIC *White & clear*

1. Make sure the surface is clean. If needed clean the surface but do not use detergent or chemicals. Apply the film always from the unprinted side.
2. Peel the **STAFIX®STATIC** film from the backer and place it on the surface from the unprinted side. For large posters or banners exceeding 1 m in length is recommended to do the installation with assistance of another person to avoid the film being wrinkled or catching dust and dirt from the floor.

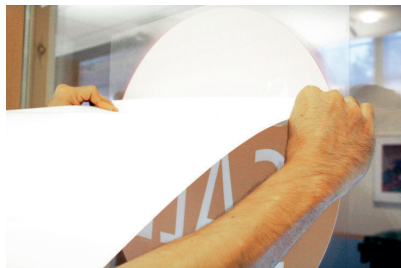


3. Remove the air between the film and the applied surface to assure strong adhesion. You can use the cardboard backer for this.



MIRROR-WISE PRINTED STICKERS

If you want to display the image through a glass window from inside to the outside (Shop display) it is strongly recommended to use the transparent film. The film should be printed 'mirror-wise', so the unprinted side would be adhered to the glass. The film will stick on the inside of the window with visibility from the outside.



Please contact Stafix for any questions related to the designing, storing, printing or general use of our products. We would be happy to assist you to reach the desired results with your print campaign.